

WAYNE COUNTY

2017

# RECYCLING

NEWS

A Household Guide to Recycling and Proper Waste Disposal



**Stark - Tuscarawas - Wayne**

Recycling District | (800) 678-9839 | [www.timetorecycle.org](http://www.timetorecycle.org)



# From the Executive Director



DAVID J. HELD, Executive Director

## YOU SPOKE. WE LISTENED.

The Stark Tuscarawas Wayne (STW) Recycling District is pleased to release the results of the 2017 Recycling Programs Survey, which was included in the 2016 Recycling Newsletter that went out to every household in the District. We had an excellent response with over 3,000 surveys received from our District residents who provided valuable feedback that will allow us to improve our service and further develop local recycling and waste diversion opportunities. Every year, the District strives to provide state-of-the-art programs that best serve our residents in the most cost efficient and effective manner as possible. Your survey responses confirmed that our programs are meeting these goals:

**How many STW Recycling District residents have access to a recycling program?**

**46% curbside recycling program access**

**54% drop-off recycling program access**

**How many surveyed residents would recommend a public recycling drop-off site to friends & family members?**

**98% would recommend**

**2% would not**

**How did surveyed residents rate the site convenience and accessibility of the public recycling drop-off sites?**

**96% good to excellent**

**4% fair or poor**

**How did surveyed residents rate their overall satisfaction with the District's recycling programs?**

**81% satisfied**

**12% neutral**

**7% dissatisfied**

## WHAT ARE THE TOP THREE AREAS RESIDENTS IDENTIFIED FOR IMPROVEMENT OF THE DISTRICT'S RECYCLING SERVICES?

### 1 Expansion of curbside recycling programs

The District will continue to provide resources and support to communities and local officials that are interested in implementing or expanding a curbside recycling program.

### 2 Increasing outlets for hazardous items

The District now has a year-round collection household hazardous waste (HHW) collection site at the City of Canton Recycle Center and holds several community HHW collection events that accept most hazardous materials a resident would typically generate. The District is always seeking recycling processors that would accept items that are difficult to recycle or hazardous.

### 3 Greater outreach regarding recycling programs and collection events

The District will continue promoting recycling opportunities through local newspapers, radio stations and our website. The District also recently started a Facebook page and will be exploring other social media to ensure our message reaches all residents, and our Outreach Coordinator will be on hand to offer presentations at local schools and events (see page 14).

If you have questions about any of our programs, please feel free to contact the District and we will be happy to assist you. You may reach us at **(800) 678-9839** or visit our website at **[www.timetorecycle.org](http://www.timetorecycle.org)**.



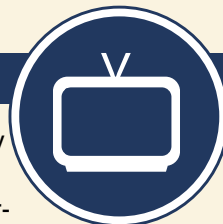
According to our recently released survey results, the District has an outlet for seven of the ten items that residents said were difficult to recycle or dispose of. Household batteries, light bulbs, household chemicals, automotive fluids, oil-based paint and mercury-containing items – such as thermometers and thermostats – are all accepted through the District's Household Hazardous Waste Collection Program (featured on the following page). In addition, there are a few locations in the District that accept latex paint (listed in the section below). Residents expressed interest in receiving additional information about some of these difficult to recycle or dispose of items, and we wanted to address the items we are most frequently asked about below.



## Televisions

The District does not currently have a cathode ray tube (CRT) Television recycling program in place

because up to 85% of the weight of the TV's consists of leaded glass and there are no recycling markets in the region for this material. Residents are permitted to dispose of these televisions in the trash or landfill, but may need to contact their waste hauler for additional pickup or fees. The District will continue to monitor emerging technology that may allow these materials to be recycled.



## Styrofoam

Though some Styrofoam containers are labeled as recyclable, there are currently no processors that

accept it in the District. It is difficult to recycle because it takes up so much space relative to its weight and Styrofoam food containers cannot be heated to the point to kill bacteria present from food residue. Styrofoam is polystyrene foam, a plastic material consisting of 98% air. It is becoming an increasingly pertinent form of litter as the lightweight nature of the material causes it to blow right out of trash bins and trucks and it takes a long time to biodegrade. Below are some common household ways to reduce polystyrene waste and consumption.

- Limit your use/intake of takeout food carriers.
- Reuse polystyrene packaging to store or send breakables.
- Take packing peanuts to a local vendor for reuse.
- Switch out polystyrene food packaging (cups, plates, utensils, etc.) with paper products.



## Latex Paint

Latex paint is not hazardous and will not be accepted at the Household Hazardous Waste Collection Center.

Instead, if you have excess paint, please try one of these options:

1. **Donate It:** Organizations, such as theatrical groups and others, may want it. Any Habitat for Humanity ReStore location in the District will accept it for recycling as well as the Stock Pile Reuse Store.
2. **Save It:** Save paint for future use. It will last for years if sealed tightly and stored where it will not freeze.
3. **Solidify It:** Solidify it and dispose of with regular trash. Simply mix in kitty litter, newspaper, or sawdust and let harden. For detailed instructions, please visit our website.

DONATE  
IT

SAVE  
IT

SOLIDIFY  
IT





# Household Hazardous Waste

**The City of Canton Recycling Center** is the District's year-round, no-cost household hazardous waste collection site. Located conveniently at 742 Schroyer Ave. SW in Canton, the center is centralized to the District. Thanks to a partnership with the Canton City Health Department and Clean Harbors Environmental Services, Inc., residents now have a fully-operational site to dispose of hazardous items such as cleaners, mercury, pesticides, gasoline, and other chemicals. The City of Canton Recycling Center also collects tires, appliances, and electronic waste generated by households at no cost.



***The center has recently expanded its hours to be open Monday through Friday, 9:00 am – 3:00 pm. Residents need to call the center at 330-430-7869 to schedule an appointment to drop off their household hazardous waste.***

## The following items are accepted:



antifreeze



motor oil



mercury-containing items



gasoline



propane tanks



fluorescent light bulbs (compact or tube-style)



pesticides



cleaning agents



household batteries



rechargeable batteries



lead acid batteries

The EPA considers household hazardous waste (HHW) any leftover household product that can catch fire, react, explode under certain circumstances, or is corrosive or toxic. HHW is not regulated like commercial waste, and it is not illegal to dump it down the drain or put it in a landfill; however, there are several risks associated with flushing or throwing away hazardous waste or leaving unused waste around your house:

- You can put trash collectors at risk (punctured propane tanks can explode or catch fire, for example).
- Children and pets could accidentally ingest poisonous material if it is accessible.
- Hazardous vapors could build up or liquids could leak if materials are not stored properly.
- Chemicals may react if accidentally mixed together.
- You can contaminate septic tanks, wastewater treatment systems, and natural bodies of water, polluting our drinking water and impeding the natural growth of plants and animals. ■

Hazardous waste that is generated in a household is not subject to state hazardous waste regulation—business waste is subject to stricter regulation of the Ohio EPA. Please contact our office if you are looking to dispose of hazardous waste generated by your business, school, or other organization.

# Prescription Drug



Wayne County has several permanent drug drop boxes located at police departments across the county. This program allows residents to safely dispose of medicines to help keep the environment clean and reduce the chance that others may accidentally take or intentionally misuse the unneeded medicine. The contents are emptied regularly and incinerated—this is the most eco-friendly way of disposing of pharmaceuticals.

The drug drop box program is coordinated through a partnership between the Wayne County Commissioners, the Recycling District, the Wayne County Sheriff's Department, and MEDWAY Drug Enforcement Agency.

The following Pharmaceutical Drugs and Over the Counter Medications are accepted: unused/expired medications, prescription or non-prescription medications, syrups, creams, mood altering drugs, pain relievers, cold and flu medications, vitamins and pet medications. Citizens can deposit pharmaceutical drugs in the form of pills, liquids and creams only. **Please do not deposit needles or syringes.**

The following locations will accept your medications free of charge, no questions asked. Unless otherwise noted, these drop boxes are accessible 24/7. ■

Facility	Location	Address	Phone	Hours
Creston Police Department	Creston	120 Brooklyn Ave	330-435-6534	24/7 but must call ahead
Dalton Police Department	Dalton	221 East Main St	330-828-2234	24/7 but must call ahead
Doylestown Police Department	Doylestown	20 S Portage St	330-658-6582	24/7 but must call ahead
Orrville City Police Department	Orrville	207 N Main St	330-684-5025	24/7 but must call ahead
Rittman Police Department	Rittman	33 E Ohio Ave	330-925-8040	24/7 but must call ahead
Shreve Police Department	Shreve	150 W McConkey St	330-567-2600	24/7 but must call ahead
Smithville Police Department	Smithville	207 W Main St	330-669-3471	24/7 but must call ahead
Wayne County Justice Center	Wooster	201 W North St	330-287-5700	24/7

## Successful 2017 Collection Events

In addition to our year-round recycling center, the District held three Household Hazardous Waste Community Recycling Days in Wayne County this year:

- Franklin Township
- Orrville Buehler's
- Wooster Milltown Buehler's

These events provided a chance for residents to get rid of hazardous waste they may have had sitting at home in a clean, safe and environmentally friendly way. Electronics, appliances, paint and household chemicals are some of the most collected items, diverting a substantial amount of these hazardous materials from the landfill.

Through our partnership with American Paint Recyclers, Buehler's, Clean Harbors Environmental Services, Goodwill Industries of Wayne & Holmes Counties, Inc. and Habitat for Humanity in Wayne County, Inc., we were able to divert thousands of additional tons of waste from our communities' landfills each year. Thank you, Wayne County! ■



### Mark your calendars for our 2018 Buehler's Collection Events:

#### Wooster Milltown

10 am – 3 pm

**Saturday, May 19th**

*The District will promote other collection events as the dates are confirmed. Please check our website or follow us on Facebook so you don't miss these announcements!*

#### Orrville

10 am – 3 pm

**Saturday, September 22nd**





# Appliances and Electronics

Several local organizations and businesses accept these items for recycling, and the District may survey and audit these facilities but inclusion on this list should not be seen as endorsement or approval by the District. Users of this list are encouraged to research any business they utilize. The information listed is current but may change so please contact the facilities ahead of time for a complete list of acceptable items, or visit the District's website for updated information.

In addition to the listed companies, the following stores also have appliance or electronic waste recycling programs – call your local store or check their website for more information: Best Buy, Home Depot, Lowe's and Staples.

**\*Appliances do not have to be in working condition, and there is no fee to drop off an appliance. Freon must be removed from appliances, unless otherwise noted.**

Location/Hours	Accepts				Notes
	Appliances	Scrap Metal	Computers & Accessories	Other Electronics	
3C Salvage Ltd. 4633 S. Jefferson Rd., Wooster 330-262-9300 Call ahead	✓	✓			Free to drop off motor oil, antifreeze, and lead acid batteries; no limit. Will pay for scrap cars & trucks.
PSC Metals, Inc, 972 Old Columbus Rd., Wooster 330-264-8956 Mon-Fri 8-4:30; Sat, 8-11:30	✓	✓			Gas, oil and freon DOES NOT have to be removed.
Wayco Recycling 7679 Burbank Rd., Wooster 330-345-1236 Mon-Fri 8am - 5pm; Sat, 8am-12pm	✓	✓	✓	✓	DOES NOT accept water softeners. Gas/oil does not have to be removed from appliances.
Goodwill 149 West Milltown Rd., Wooster 330-262-7196 Mon-Sat. 9-9; Sun. 11-7			✓		If the glass is broken on monitor/scanner, place it in a cardboard box lined with a large plastic garbage bag. Seal the box and clearly label it with "broken monitor/scanner" and the date.
Goodwill 1201 North Main St., Orrville 330-684-2050 Mon-Sat. 9-8; Sun. 11-6			✓		If the glass is broken on monitor/scanner, place it in a cardboard box lined with a large plastic garbage bag. Seal the box and clearly label it with "broken monitor/scanner" and the date.
Goodwill 366 N Main St., Rittman 330-287-5060 Mon-Sat. 9-8; Sun. 11-6			✓		If the glass is broken on monitor/scanner, place it in a cardboard box lined with a large plastic garbage bag. Seal the box and clearly label it with "broken monitor/scanner" and the date.

### Appliances:

Unless otherwise noted, the listed facilities accept: Refrigerators, Freezers, Air Conditioners, Dehumidifiers, Humidifiers, Microwaves, Stoves, Washers, Dryers, Furnace, Water Heaters, Water Softeners, Sinks/Tubs (metal), lawn mowers, snow blowers and weed eaters.

### Scrap Metal:

Unless otherwise noted, the listed facilities accept: Aluminum Cans, Steel Cans, Aluminum Siding, Copper, Brass, Stainless Steel, Iron, Radiators, Catalytic Converters, Lead, Insulated Wire, Nickel.

### Computers & Accessories:

Unless otherwise noted, the listed facilities accept: Computers, Connectors and Cords, Hard Drives, Keyboards, Laptops, Modems, Monitors and Mouse.

### Electronic Waste:

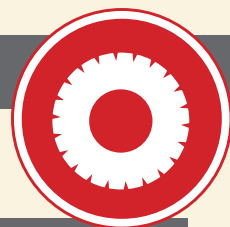
Unless otherwise noted, the listed facilities accept: Audio/Visual Equipment, Cell Phones, CD Players, CDs, DVDs, DVD Players, Fax Machines, Game Consoles, Paper Shredders, Power Supplies, Printers, Servers and Mainframes, Speakers, Stereos & Radios, Tape Drives, Telephones, Flat Screen Televisions, Toner Cartridges, VCR Tapes, and. VCRs.

## Appliance Freon Removal



Location/Hours	Notes
Bennet's Appliance Center, Inc. 1300 W High, Orrville 330-683-8065 Mon & Thurs 9am-8pm; Tue, Wed & Fri 9am-5:30pm; Sat 9am-5pm	Freon removal: In store: \$15; In home: \$67

## Tire Drop-off Sites



There are options for properly disposing of residents' automotive tires. First, if purchasing new tires through a tire dealer, check and see if the dealer will dispose of the old tires. Normally the dealers charge a small fee per tire to dispose of the unwanted tires. Tires are also accepted at the following location.

Facility	Phone	Notes	Hours
Goodwill Industries of Wayne and Holmes Counties 1034 Nold Ave., Wooster www.goodwillconnect.org	330-264-1300	Limit of 12 tires per year per person (off the rims). Residents of Stark, Tuscarawas, or Wayne Counties only. Free of charge	Mon-Fri 8:30am-2:30pm

## Mosquito Prevention Partnership

The Stark-Tuscarawas-Wayne Recycling District would like to thank the Goodwill Industries of Wayne & Holmes Counties for its continued partnership in efforts to reduce tire dumps. Over the last decade, Goodwill Industries has accepted scrap tires from residents of Wayne County. This program was implemented in effort to diminish tire dumps as they become breeding grounds for mosquitos and mosquito-borne illnesses like West Nile and Zika. Mosquitos migrate toward these dumps, creating a public health and environmental problem. Providing residents with a free tire program decreases this threat within the community and surrounding areas.



Thanks to our partnership with Wooster Goodwill, we have collected over **166 TONS** of tires from Wayne County in the last three years! In 2017 alone, we have had over 700 people participate. Thanks for participating and making a difference in your community! ■

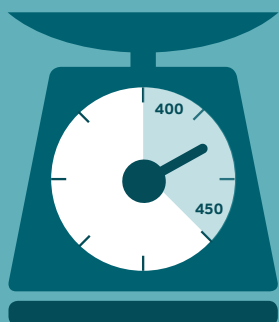




## INCREASED RECOVERY.

Programs using carts, common suite of materials, strong outreach and other BMPs can recover 400-450 lbs/hh/yr.

**400-450  
LBS. PER  
HOUSEHOLD  
PER YEAR**



## MORE CONVENIENCE.

Residents can more easily fit all of their recyclables into one container, then simply roll those items to the curb.



## COST SAVINGS.

Budgets benefit from decreased disposal costs, smaller collection crews, more efficiency on the route, and decreased workers' compensation.



Decreased  
disposal  
costs



Smaller  
collection  
staff



Automation  
& compaction  
mean more  
efficient routes



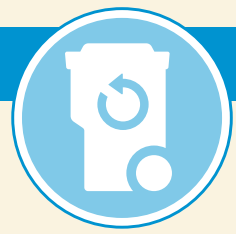
Flexibility  
to collect  
bi-weekly



Decreased  
Workers'  
Compensation  
claims



# Curbside Collection



The District strongly supports curbside recycling programs and believes this system of recycling for the residential sector is the most effective. District staff work with communities to help implement/expand curbside recycling programs that are cost effective, sustainable and meet the needs of the residents. In addition, the District's Recycling Makes Sense Grant Program provides incentives for political subdivisions to accomplish that objective.

Community	Phone	Website	Collection Schedule and Container
City of Orrville	330-684-5004	<a href="http://www.orrville.com">www.orrville.com</a>	Every Thursday. Use 64-gallon recycling container provided.
City of Rittman	330-925-2045	<a href="http://www.rittman.com">www.rittman.com</a>	Every other Tuesday. Use 64-gallon recycling container provided.
City of Wooster	330-263-5200	<a href="http://www.woosteroh.com">www.woosteroh.com</a>	Every week. (Same day as trash pick-up.) Use 64-gallon green recycling container provided.
Village of Doylestown	330-658-2181	<a href="http://www.doylestown.com">www.doylestown.com</a>	1st and 3rd Friday. Use 18-gallon recycling container provided.
Village of Marshallville	330-855-2491	<a href="http://www.villageofmarshallville.org">www.villageofmarshallville.org</a>	Every Friday. Use 64-gallon recycling container provided.

## Marshallville Goes Green!



The Village of Marshallville strives to be a leader in waste reduction by providing its residents with a convenient curbside recycling program. The village is one of five communities in the county to have such a program, leading the area in their commitment to protect and improve the community and environment. At the beginning of last year, the village's curbside recycling program replaced 18-gallon totes with 64-gallon carts, which allowed residents to easily fit all their recyclables into one container as well as easily transport them to the curb. Additionally, the frequency of recycling has increased from biweekly to weekly allowing for a larger amount of intake. The recycling contract is through Kimble Recycling and Disposal. It was originally effective January 1, 2016 but was amended effective July 1, 2017, and expires December 31, 2020.

According to the Recycling Partnership™, there are many benefits for communities who utilize large wheeled carts for their curbside recycling programs:

- **Increased recovery:** Programs that are single-stream (meaning all recyclables are mixed together), use large wheeled containers, and provide strong outreach to the community can recover 400-450 pounds per household per year.
- **Convenience:** Residents can more easily fit all their recyclables into one container (no sorting necessary) then simply roll those items to the curb.
- **Cost Savings:** Budgets benefit from decreased disposal costs and the potential for more efficiency on the route—typically all recyclable items including bulky items can fit into the container and lids keep materials contained so there is less cleanup. ■





# Recycling Centers

Recycling centers that operate independently from the District's programs can accept not only typical recyclables but many other items as well. These centers offer a convenient way to drop off many items at once, and in some cases, residents can receive money for their recyclables. ALL recyclables must be separated.

Facility	Phone	Notes	Hours
Wayco Recycling 7679 Burbank Rd Wooster <a href="http://www.secondspinwheels.com">www.secondspinwheels.com</a>	330-345-1236	Cans – Aluminum, steel and bi-metal cans (rinse). Cardboard – Accepts all cardboard items. Appliances – Accepts all appliances except water softeners. Freon must be removed. Computers/electronics – Accepts all computers/electronics except for televisions and monitors. Scrap Metals – Accepts all scrap metal. Contact them for a complete list of items and charges. Freon MUST BE removed from appliance. Gas/oil does not have to be removed.	Mon-Fri 8am-5pm; Sat, 8am-12pm (Hours may vary during the winter)

## Local Students Expand Their Horizons



Scientists and scientific societies across the US have declared April 22, 2017 to be a day to March for Science. Rallies and gatherings on that day were planned to call attention to the critical importance of scientific information in policy, decision making, and our collective political, social, and environmental life.

A record number of over 200 fifth- and sixth-grade girls descended on The College of Wooster Saturday April 22 for "Expanding Your Horizons," an annual workshop designed to encourage young women to enter science- and math-related fields by affording them hands-on experience and showing them the real-life applications of these disciplines.

The 2017 Expanding Your Horizons Conference offered attendees 22 possible hands-on workshops with titles such as Happiness is a Healthy Pet, Solve the Plant Mystery, Spine Design, Edible Landfill and Make a Computer Program from Scratch. Each girl attended three workshops in small groups of about 10 students.

Because the event coincided with Earth Day this year, Wendy Bullock, Outreach Coordinator from the Stark-Tuscarawas-Wayne Joint Solid Waste Management District, was the lunchtime speaker and focused on the environmental side of science and included information on environmental careers. ■



# Yard Waste Drop-off Sites



The District is pleased to be able to continue its yard waste collection program. Please review the program details below before dropping off your yard waste. Local landscaping companies may accept your yard waste materials for no cost as well. Also, make sure to see if your community has a curbside leaf, branch or Christmas tree collection program that recycles the waste collected.

Facility	Phone	Notes	Hours
Paradise Composting 4300 Mechanicsburg Rd Wooster	330-669-3141	Cost for residents to drop off is \$5 for a small amount of yard waste material (1-2 bags) or \$10 per truckload. <b>Accepted Materials:</b> fruits & vegetables, bread, pasta, baked goods, meat or fish bones and scraps, egg shells & dairy products, coffee grounds, coffee filters, tea bags, paper towels, napkins, paper plates – NOT foam, paper cups – NOT foam, milk & juice cartons, pizza boxes, cereal boxes, cardboard egg cartons – NOT foam, waxed cardboard <b>Unaccepted Materials:</b> blade walnut tree loves or twigs, coal or charcoal ash, fats, grease, lard, oils, treated wood, furniture, fencing, railroad ties, and nonorganic materials such as plastic bags, mattresses, drywall and other construction and demolition material. Also, no plastics marked as compostable.	Mon-Fri by appointment Sat 9am-1pm (Hours: 1st Saturday in April through 3rd Saturday in November; rest of year by appointment)
Paradise Lawn Care, Inc 6203 Akron Rd Smithville	330-669-3141	Cost for residents to drop off is \$5 for a small amount of yard waste material (1-2 bags) or \$10 per truckload. Yard waste drop-off is offered at this location, restricted to lawn/weed clippings, garden debris, tree limbs and brush only.	Mon-Fri 9am-5pm
Village of Dalton 37 N Freet St Wayne <a href="http://daltonohio.org">http://daltonohio.org</a>	330-828-2221	<b>Village Residents Only.</b> Accepts: grass clippings, garden waste, leaves, brush, shrubs, and branches only (no food items)	Dawn to dusk
Village of Creston 179 Burbank St Wayne <a href="http://www.crestonvillage.org">www.crestonvillage.org</a>	330-435-6021	<b>Village Residents Only.</b> Accepts: grass clippings and leaves.	Dawn to dusk
City of Orrville Apple Ave Wayne <a href="http://www.orrville.com">www.orrville.com</a>	330-684-5000	<b>City Residents Only.</b> Accepts: tree trimmings, brush, grass clippings and leaves (excluding stumps and roots). The City will have composted material, leaf mulch, and wood chips available at no cost to Orrville residents for noncommercial use.	Wed 7:15am-3:15pm; Sat 8am-12pm The Orrville Compost Center is open through April 7-October 27.





## Recycling Drop-off Sites

The District hosts more than 70 recycling drop-off sites that are available to every resident in the District. There is no charge for residents to use the sites. Residents are asked to sort their recyclables before dropping off. The following drop-offs are located in Wayne County. For a complete list of accepted recyclables and how to sort your recyclables, **see the following page.**

Community	Location	Address	Hours
Village of Apple Creek	Street Garage	3474 S Apple Creek Rd	Dawn to Dusk
Baughman Township	Township Garage	3470 Mount Eaton Rd	Dawn to Dusk
Chester Township	Northwestern Elementary School	7334 N Elyria Rd	Dawn to Dusk
Chippewa Township	Street Garage	14065 Galehouse Rd	Dawn to Dusk
Congress Township	Service Center	10200 Congress Rd	Dawn to Dusk
Village of Creston	Village Garage	150 Factory St	Mon-Fri, 7am-7pm; Sat, 9am-12pm
Village of Dalton	Village Garage	47 N Freet St	Dawn to Dusk
Franklin Township	Township Hall	138 E Moreland Rd	Dawn to Dusk
Village of Fredericksburg	Elementary School (in lot next to school on Water St.)	160 W Clay St	Dawn to Dusk
Kidron	Lehman Hardware and Appliances	4779 Kidron Rd	Dawn to Dusk
Milton Township	Township Garage	13985 Kauffman Ave	Dawn to Dusk
City of Orrville	Buehler's Fresh Food (behind building)	1114 W High St	Dawn to Dusk
Paint Township	Township Garage	10075 Winesburg Rd	Dawn to Dusk
Plain Township	Township Garage	3026 S Elyria Rd	Dawn to Dusk
Village of Shreve	East of Chicago	275 N Market St	Dawn to Dusk
Village of Smithville	Across from Town & Country and Dairyland	686 E Main St	Dawn to Dusk
Wayne Township	Township Garage	5277 Cleveland Rd	Dawn to Dusk
Village of West Salem	Street Garage	115 S Main St	Dawn to Dusk
City of Wooster	Buehler's Fresh Food	3540 Burbank Rd	Dawn to Dusk
	College of Wooster Service Building Garage	1433 Beall Ave (behind apartment complex)	Dawn to Dusk
Wooster Township	Valley College Grange	2411 Shreve Rd	Dawn to Dusk

## Litter - It's Against the Law!



The Recycling District partners with each county's Sheriff Department for a deputy to conduct litter investigations and enforce illegal dumping laws. The deputies also work with the Community Corrections Program to arrange highway and roadway cleanups and monitor traffic routes to the landfills to make sure the routes are clear of fallen debris from trash trucks. Make sure to familiarize yourself with what items are acceptable at the public drop-off sites, or one of these deputies may be knocking at your door! ■

*Left to right: Steve Browning, Wayne County Litter Deputy, Bob Copple, Tuscarawas County Litter Deputy, and Chris Newman, Stark County Litter Deputy.*

# What can I recycle at the Drop-Offs?



THANK YOU FOR RECYCLING THESE:



## Acceptable Paper Items

Paper should be dry and free from contaminants



Envelopes, Greeting Cards, Legal Pads, Magazines, Newspapers, Phone Books, and Other Paper Items

## Acceptable Cardboard Items

Cardboard should be dry and free from contaminants

**CARDBOARD BOXES SHOULD BE FLATTENED**



Shipping Boxes, Cereal/Cracker Boxes, Paper Towel/Toilet Paper Rolls, Tissue Boxes, Pizza Boxes, and Other Cardboard Items

## Acceptable Aluminum and Steel Cans, Cartons, Glass, and Plastic Items



Aluminum and Steel Cans  
(empty and rinse)



Food and Beverage Cartons  
(empty and replace cap)



Bottles and Jars  
(empty and rinse)



Kitchen, Laundry, Bath: Bottles, Tubs, and Jugs  
(empty and replace cap)



## Unacceptable Items



No Food or Liquid  
(empty all containers)



No Light Bulbs, Mirrors, or Windows



No Televisions or Other Electronics



No Tires



No Tanglers  
(no hoses, wires or chains)



No Carpet



No Construction Materials



No Household Items



No Styrofoam Containers



No Plastic Bags  
(return to retail)



No Mattresses or Furniture

# Getting the Message Out!



Wendy Bullock,  
Outreach Coordinator

Education is a key element in the District's mission to reduce the waste stream. The District is dedicated to accomplishing its mission through a variety of educational programs including:

## Classroom and Community Presentations

Presentations are available for school groups (pre-school through college), area churches and civic organizations. The District Outreach Coordinator can accommodate groups of any size from a small audience to a large assembly. Topics covered include recycling, recycled products, waste reduction, composting, conservation and landfill construction. Presentation content for each topic can be customized based on the intended audience, making this educational opportunity an interesting and enjoyable experience for any age group! The District can also provide resource books and other educational materials to teachers and group leaders who can then present directly to their group.

## Community Outreach

The District participates in a variety of community outreach activities by attending events such as county fairs, local conferences, and public meetings. This gives the District an opportunity to educate residents, businesses, and organizations about recycling and the waste reduction programs and tools available to them. We enjoy meeting people in the communities we serve, answering your questions, and hearing your feedback. We encourage you to stop by our booth if you see us at an event!

## Waste Audits

The District can conduct a waste audit for businesses and organizations and supply information on developing an education plan for employees, implementing the audit findings, and creating contract documents.

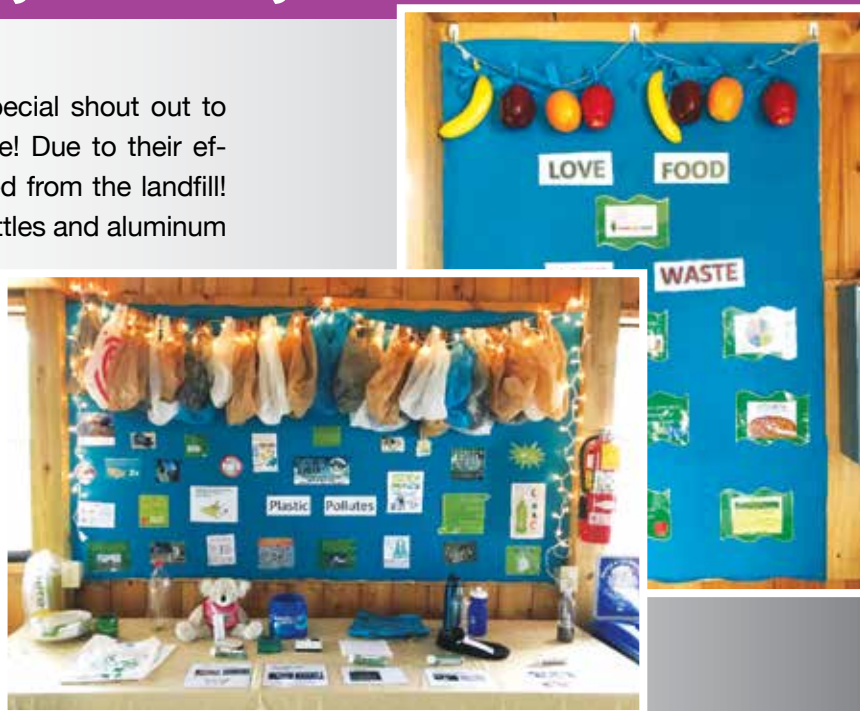
## Field Trips

Make a landfill or material recovery facility (MRF) tour part of your classroom curriculum or an interesting learning opportunity for your group/club/organization. Our Outreach Coordinator can assist you with scheduling a field trip to a local landfill or recycling facility. ■

**For more information on any of these opportunities,  
please contact the District's Outreach Coordinator at 800-678-9839.**

## Seeing Green at the Wayne County Fair!

The Recycling District would like to give a special shout out to the Wayne County Fair's Recycling Committee! Due to their efforts, 21,220 pounds of materials were diverted from the landfill! This included typical recyclables like plastic bottles and aluminum cans plus food waste and food-contaminated cardboard waste, which was composted at Paradise Lawn Care. Thank you for your hard work, team! And speaking of the fair, did you happen to stop by the Recycling District's booth? If not, check out these photos of our new display! ■





# 2016 Wayne County Recycling Report Card

## Wayne County Materials Collected (Tons)

COMMUNITY	LOCATION	RECYCLE TOTAL
<b>DROP OFF RECYCLING PROGRAMS</b>		
Village of Apple Creek		125
Baughman Township		62
Chester Township		96
Chippewa Township (Doylestown)		58
College of Wooster		57
Congress Township		41
Village of Creston		69
Village of Dalton		188
Franklin Township		72
Village of Fredericksburg		68
Kidron		118
Milton Township		59
City of Orrville		130
Paint Township		45
Plain Township		57
Village of Shreve		164
Village of Smithville		154
Wayne Township		95
Village of West Salem		89
City of Wooster		273
Wooster Township		142
<b>CURBSIDE RECYCLING PROGRAMS</b>		
Village of Doylestown		81
City of Orrville		554
City of Rittman		368
Village of Marshallville		38
City of Wooster		1,604
<b>RECYCLABLES TOTALS</b>		<b>4,808</b>



## Recycling Staff Serves Stark, Tuscarawas, and Wayne Counties!

From left to right: David Held, Rachel Rothacher, Tiffany Hupp, Judy Hall, Wendy Bullock, Erica Wright and Steven Tharp

## Board of Directors

### Stark



***Janet Weir Creighton***  
Stark County  
Commissioner



***Richard Regula***  
Stark County  
Commissioner



***Bill Smith***  
Stark County  
Commissioner

### Tuscarawas



***Chris Abbuhl***  
Tuscarawas County  
Commissioner



***Kerry Metzger***  
Tuscarawas County  
Commissioner



***Joe Sciarretti***  
Tuscarawas County  
Commissioner

### Wayne



***Ron Amstutz***  
Wayne County  
Commissioner



***Ann Obrecht***  
Wayne County  
Commissioner



***Sue Smail***  
Wayne County  
Commissioner

## Administration



***David Held***  
Executive Director



***Erica Wright***  
Finance Director



***Rachel Rothacher***  
Administrative  
Director

## Policy Committee Members

### Stark County

***Janet Weir Creighton***  
Stark County  
Commissioner

***Kirk Norris***  
Stark County  
Health Department

***Doug Baum***  
Pike Township Trustee

***William Bartos***  
City of Canton

***Elaine Campbell***  
Industrial  
Representative

***Carl Rose***  
Public Representative

***Mark Cozy***  
Public Representative

### Tuscarawas County

***Joe Sciarretti***  
Tuscarawas County  
Commissioner

***Michael Chek***  
Tuscarawas County  
Health Department

***Matt Ritterbeck***  
Lawrence Township  
Trustee

***Joel Day***  
Mayor of  
New Philadelphia

***Matt Bender***  
Industrial  
Representative

***Lee Finley***  
Public Representative

***David Bennett***  
Public Representative

### Wayne County

***Ron Amstutz***  
Wayne County  
Commissioner

***Nicholas Cascarelli***  
Wayne County  
Health Department

***Bill Cletzer***  
Congress Township  
Trustee

***Mark Nussbaum***  
City of Wooster

***Becky Foster***  
Industrial  
Representative

***Robert Holland***  
Public Representative

***Brian Gentry***  
Public Representative